

TEAR ALONG HERE

June 2007

LXF DVD93

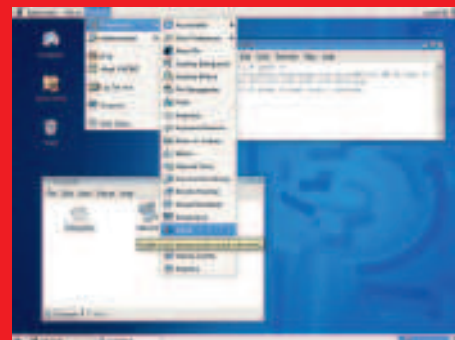
4GB software-packed DVD, including...

32 BIT - FOR X86 MACHINES

StartCom Enterprise Linux 5

Rock-solid distro for home or work, built from Red Hat sources

- » Fantastic stability
- » Ideal for desktops and servers
- » Xen virtualisation
- » Community support



OpenOffice.org 2.2

Premier office suite, featuring improved font rendering, better Excel support and new Base features



Magazine PDFs

- » Build a Linux kiosk
- » Explore the world of Creative Commons
- » Harness Subversion



Plus...

- Kino 1.0:** Digital video editing perfection
- Blender 2.43:** With new Mesh Sculpt tool
- Video:** Latest Nvidia and ATI drivers
- Answers:** 80 Linux problems solved!
- PyTraffic:** Car-sliding puzzler capers



Using your LXF DVD: Initial steps



- 1 Insert the DVD-ROM into your drive and open the index.html file to browse through the software.
- 2 Click on the links in the left-hand side of the browser window to access software categories.
- 3 Programs are provided in source code as well as binary packages wherever possible.

TEAR ALONG HERE

Cut out the larger box for a DVD case, or the inside box for a CD case

StartCom 5

LXF DVD93

June 2007



» Contents of this month's DVD...

StartCom EL 5	Cedar Backup 2.13.1	Qemu 0.9.0
OpenOffice.org 2.2	Krename 3.0.14	ATI driver 8.35.5
Magazine PDFs	Little Polish 0.7	Bash 3.2
Article index	Hinversi 0.8.1	Cairo 1.4.2
Answers	Apache 2.2.4	CheckInstall 1.6.1
Tutorial code	MySQL 5.0.37	Coreutils 6.9
GDC 0.23	PHP 5.2.1	GLib 2.12.11
MonoDevelop 0.13	ChouXiang 1.23	GTK 2.10.11
Nvu 1.0	Funny_Boat 1.5	HardInfo 0.4.1
Kflickr 0.8	KardsGT 0.5.0	Jigdo 0.7.1
RecordMyDesktop 0.3.4	PyTraffic 2.5.4	Kernel 2.6.20.4
LMSensors 2.10.3	Blender 2.43	LibXML 2 2.6.27
Gambas 1.9.48	Rute 1.0.0	Ncurses 5.6
Anjuta 2.1.2	InitNG 0.6.10	Nvidia driver 1.0-9755
Virgil b02	DenyHosts 2.6	Python 2.5
	Analog 6.0	Rawrite
	GHamachi 0.7.2	SBM 3.6-4
	Hamachi 0.9.9-20	SDL 1.2.11



LXF DVD93 June 2007 StartCom EL 5

ANY COMMENTS?

Send your thoughts and coverdisc suggestions to mike.saunders@futurenet.co.uk with "Disc Contents Suggestion" as the subject line of the email, or by post to:

Disc Editor, Linux Format, Future Publishing, 30 Monmouth Street, Bath BA1 2BW

• Please read the coverdisc pages in the magazine before using this disc.



LXF93D/06/07

© Future Publishing

This is a Future Technology DVD-ROM This disc has been thoroughly scanned and tested at all stages of production, but – as with all new software – we still recommend you run a virus checker before use. We also recommend that you have an up-to-date backup of your hard drive at all times. Unfortunately, Future Publishing Ltd cannot accept responsibility for any disruption, damage and/or loss to your data or computer system that may occur while using this DVD, the programs and data on it. Consult your network administrator before installing any software on a networked PC (or Linux box).

Defective discs In the unlikely event of your disc being defective please email our support team (support@futurenet.co.uk) for assistance. If you would prefer to talk to a member of our reader support team please call +44 (0)1225 822743.

Software problems If you have a query about using your disc's interface or content, please visit our reader support website located at www.futurenet.co.uk/support, where you can find solutions to many common problems. If you are still experiencing difficulties, you can email our reader support team at support@futurenet.co.uk for further assistance. If you do not have internet access please call +44 (0)1225 442244 between 9:30 am and 5:30 pm UK time, Monday to Friday. Please note that we can only provide basic advice on using the interface and installing software from the disc. Unfortunately we can't give in-depth help on the applications, or on your hardware or operating system. We are unable to support beta software.