

BRU is the high-performance UNIX Backup and Restore Utility designed for maximum reliability, speed, flexibility, and ease of use. By making UNIX backups easy, fast, and safe, it's much more than just a replacement for tar, dump, and cpio. BRU is a complete backup system with a multitude of options.



Backup You Can Trust!™

Here's what BRU can do for you:

- Fast – Backup and restore at the performance level of your backup device
- Easy – Point-and-click interface for file and directory level backup and restore
- Safe – Full data verification and error detection and recovery
- Network backups using NFS, AFS, SMB, and other system-supported protocols
- Remote backups to tape devices located across the network
- On-the-fly data compression
- Easy-to-schedule unattended backups
- Full backup and restore of raw partitions
- Works with tape drives (1/4-inch, DLT, 4mm, 8mm, MLR, TRAVAN and others), removable disk technology (Iomega, SyQuest, even floppy), disk-files, and MO drives
- Support for NIS/DCE environments
- BRU supports networked Windows, Windows NT, and Macintosh files on Linux systems through Netatalk and Samba
- CRU™ (Crash Recovery Utility) easily creates custom boot disks to speed a total system restore. For Intel® Linux and SCO versions, only.

Enhanced Software Technologies, Inc.

4014 E. Broadway Rd. Suite 405
 Phoenix, Arizona 85040
 Toll Free: 800.998.8649
 T: (602) 470.1115
 F: (602) 470.1116
 E: info@estinc.com

www.estinc.com



ENHANCED SOFTWARE TECHNOLOGIES
 Software You Can Trust™

From BRU, the #1 Award Winning Backup and Restore Utility for Linux® and UNIX systems.

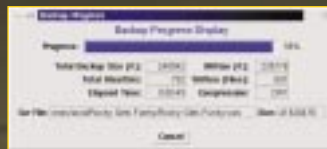
BRU has provided "Backup You Can Trust" for UNIX systems since 1985, and for Linux systems since 1994. EST is the recognized leader in Linux backup.

BRU is designed for maximum reliability. By providing multiple levels of data verification, and automatically verifying every backup, BRU acts as an "Early Warning System," ensuring that your backup is good, or that you know immediately if it is not! Without verified backups, there is no assurance that your data can be restored correctly in the event of a disaster. Additionally, BRU is renowned for its ability to detect and recover from errors, and offers leading edge features like Autoscan™, Anytime Verify™, Translate-On-Restore™, Smart Restore™ and double buffering, to save time and eliminate the fear of lost or corrupted data. Combine that with point and click simplicity, a concise graphical interface and options to suit both the novice and experienced user, and you can see why BRU is #1.

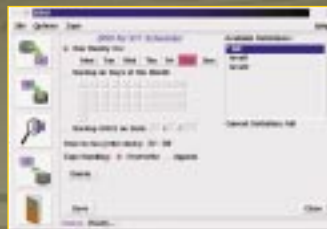
Your data is your most valuable computing asset. You need to know it is backed up with no errors, and that it will be there when you need it. You need backup you can trust - BRU.



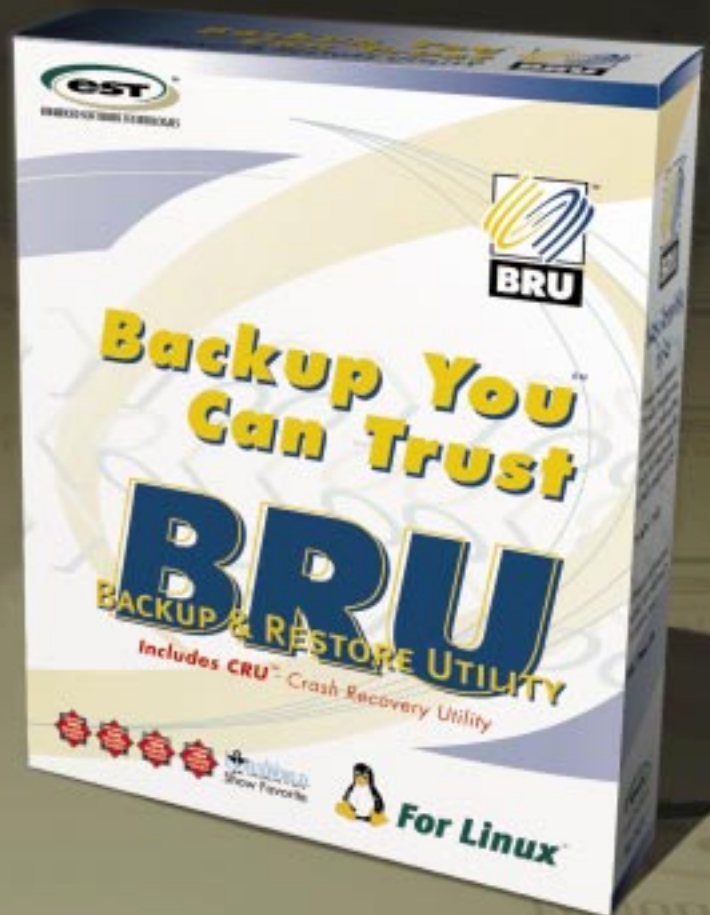
BRU's convenient, single-window layout fits easily within a 640 x 480 display with all backup tools viewed within an easy-to-use interface.



The Backup Progress Display in BRU gives you statistics such as finished backup file size, written file size, elapsed backup time, and compression size at a glance.



The BRU interface brings point-and-click simplicity to most typical backup and restore operations, including easy scheduling for unattended backups.





BRU

is available for most UNIX or UNIX-like systems, including

- Linux
- SCO
- Sun
- HP
- IBM
- Digital
- Sequent
- Unisys
- BSD

From \$299 to \$1299 USD

BRU-PE

Personal Edition is available for the following systems

- Linux
- FreeBSD

\$89 USD

BRU comes with EST's 60-Day Risk-Free Evaluation Policy and 30 days of free access to EST's Backup Assistance Hotline.

Dealer inquiries welcome.

Call 800-998-8649
www.estinc.com

LINUX[®] COMPATIBLE



FOR BACKUP

Visit www.linuxtapecert.org
for Linux Backup Information

Exceptional Reliability

- Anytime Verify™ allows you to re-verify your data at anytime.
- Data Verification. BRU ensures that your backup is correct by verifying archives in multiple ways, including checksums and bit-by-bit comparison with the original file.
- Automatic Execution Logging. Because backups are serious business, you want to know immediately if anything went wrong. BRU automatically writes any warning/error messages to a special execution log file. The log also contains time-stamps of when BRU started and stopped.
- AUTOSCAN™ Verification. BRU will automatically scan each archive tape and verify it for errors immediately after it is written. Customer-proven detection of problems caused by hardware or software errors works like an "early warning system" to detect problems before they become serious – like a tape drive that is just starting to fail.
- Error Detection and Recovery. BRU detects and recovers from most errors that occur while reading or writing. Unlike other utilities which stop on errors, BRU makes several attempts to read and recover the maximum amount of data from damaged archives.
- Long Pathnames. BRU will backup and restore files with pathnames up to 1023 characters long. This is useful for networked systems or for file systems with deep directories. Other backup utilities such as tar can only handle pathnames of 100 characters or less.
- Sparse Files. BRU will properly backup and restore large sparse files.

Extensive Network Support

- Network Backups. BRU supports many different network protocols, including NFS, SMB, NCD and Netatalk. BRU also properly backs up file names that include strange characters and spaces.
- Remote Tape Drives. Write backup data across the network to a tape drive located on another machine.

Reliable Tape Management

- Tape Directory. A quick preview of a backup tape's contents eliminates the need for a time-consuming read.
- Tape Labeling. For easy identification, all tapes are automatically labeled with date/time information when BRU writes to them. An optional label containing up to 63 characters can also be specified by the user. To make sure the correct tape is used, label functions can also be used when restoring.
- Overwrite Protection. Protects against accidentally overwriting a recent backup tape (like the one from last night).
- Tape Stacker Interface. Use with any sequential tape loader or jukebox.

Easy-to-Access Support

- Built-in Help Pages. Useful when you can't find the manual.
- Backup Assistance Hotline. If you do have problems, we're here to help. FREE for the first 30 days, renewable in low-cost, one-year increments.

Also From EST:

QuickStart Data Rescue™

Enhanced Software Technologies Inc. also produces Quickstart, a single boot disk Disaster Recovery Utility that supports all PC operating systems. Contact EST or your reseller for information. Dealer inquiries invited.

Complete Flexibility

- Unattended Backups. A special background mode lets you schedule BRU to run under cron, allowing backups to be performed overnight.
- Support For Any Type of Device. BRU works with all kinds of UNIX backup devices, including 4mm DAT, 8mm Exabyte, DLT, QIC, 9-track, disk-based files, and others.
- Handles Special Files. BRU will backup and restore all types of files, including special device files, links (symbolic and hard), pipes, empty directories – all the files that are skipped by utilities like tar. BRU will backup and restore every file on your disk.
- Faster Crash Recovery. Since BRU will backup and restore all files, this saves time and makes it easier to restore your system in the event of a crash.
- Protective File Restore. Restores files only from the backup tape that is newer – protects you by NOT overwriting files that have been recently updated (unless you force it to overwrite all files).
- Easy Integration. Dozens of options and environment variables make it easy to include BRU as part of a shell script or menu system. With BRU, you can do backups your way – exactly how you want to do it.
- Translate-on-Restore™. Rename or move files when restoring.
- Root-only Restore. Restore just the files in the root directory, excluding files from any other file systems.
- Smart Restore™. Restore active shared library and executable binary files without crashing the system.
- Multiple Volume Archives. With BRU, archives can span more than one tape, allowing you to do backups of any size.
- Faster Backups. BRU is "tunable" for peak performance, so you can run your tape drive at its maximum rated speed.
- Back Up Live File systems. It's not necessary to go into single-user mode. You can backup all the mounted file systems or choose individual file systems.
- Incremental/Differential Backups. Sometimes you don't want to back up everything. You can save time (and tape) by backing up only the files that have changed. Other options let you select by owner or type of file.
- Raw Data Partitions. Backup and restore raw data partitions (often used by database programs like Oracle).
- Select by Directory Depth. With this option, you can specify how many directory levels you want, which enables you to backup or restore ONLY the files in a directory, but NOT the files in the directories below it.
- Include/Exclude Files. You can direct BRU to include or exclude certain files or directories in a backup (or restore). By specifying certain patterns (wildcard or regular expressions), you can perform customized backups.
- Data Compression. BRU can save space on your archive tape by compressing data as part of the backup operation. Files are usually compressed by 10% to 90% (depending on the type of data). Like all BRU data, the compressed files are saved in a special error-detection format. Compression is done in memory (no temporary disk space is used), so files of any size can be compressed. BRU will not attempt to compress files that are already compressed, which speeds your backup.



ENHANCED SOFTWARE TECHNOLOGIES
Software You Can TrustSM